

Planning Review Committee

On **Thursday 18 April 2024** At **6.00 pm**

www.oxford.gov.uk



Presentations

Contents

Note: Planning Committee presentations contain mostly pictures, maps and plans. These are not in an accessible format.

To see full details of the application including full plans, representations, public comments and supplementary information, please [click here](#) and enter the relevant Planning Reference number in the search box

- | | | |
|----|--|--------|
| 5. | 23/02506/CT3: South Side, Oxpens Road, Oxford OX1 1RX | 3 - 24 |
|----|--|--------|

The agenda, reports and any additional supplements can be found together with this supplement on the committee meeting webpage.

*View or subscribe to updates for agendas, reports and minutes at mycouncil.oxford.gov.uk.
All public papers are available from the calendar link to this meeting once published*

Oxford City Council, Town Hall, St Aldate's Oxford OX1 1BX

This page is intentionally left blank

Oxford City Planning Review Committee Presentation

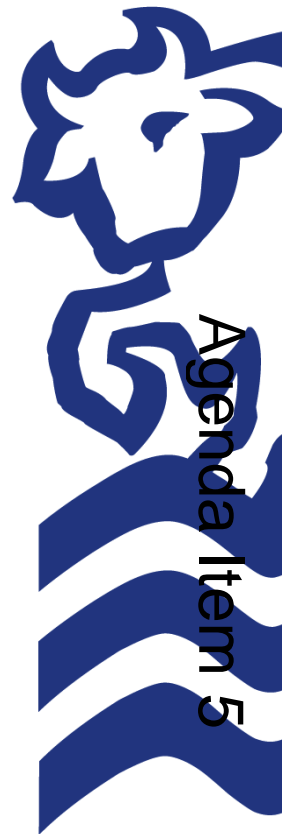
Reference Number: 23/02506/CT3

Site Address: South Side Oxpens Road

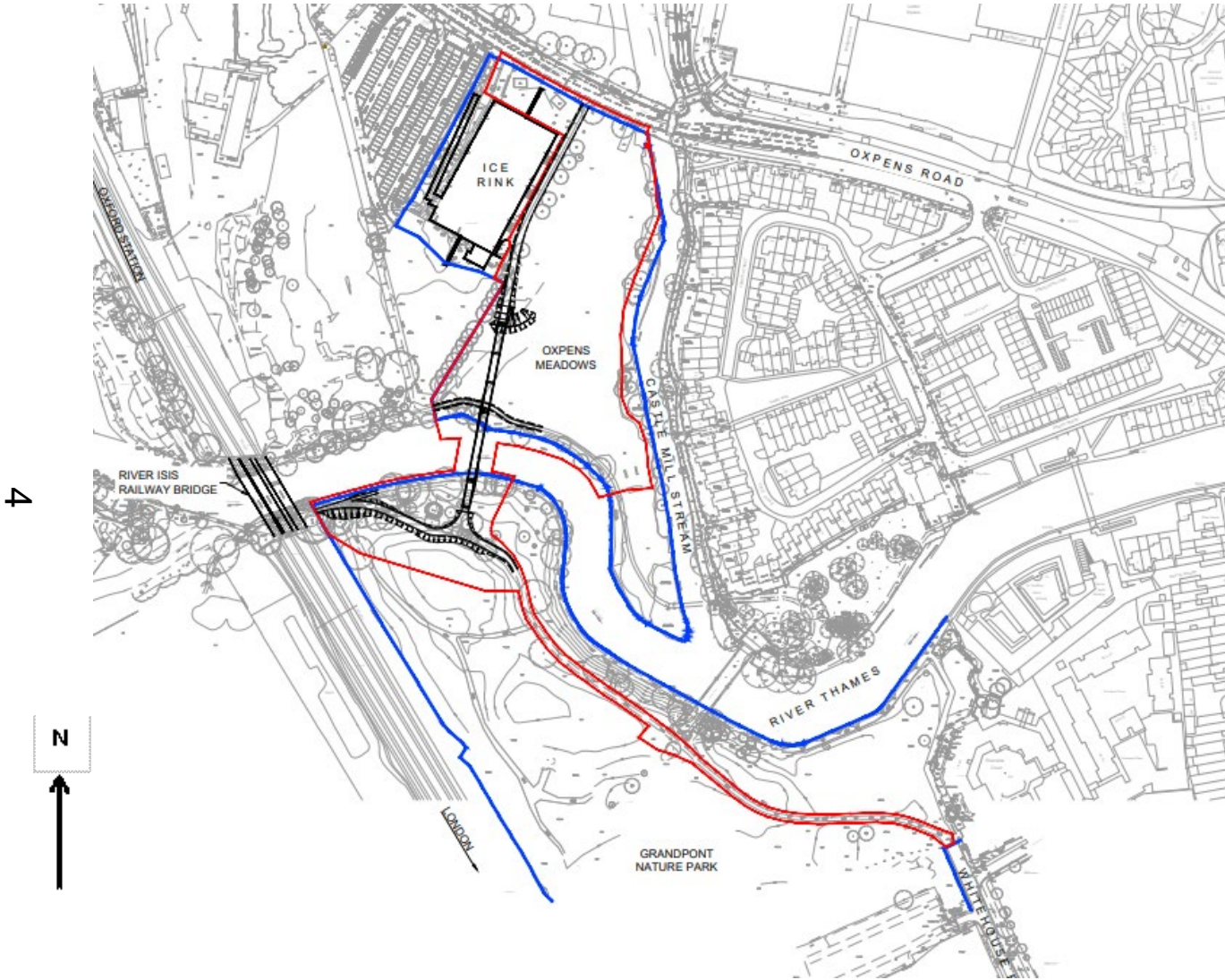
www.oxford.gov.uk



3



Site Plan



Landscape Plan



www.oxford.gov.uk



North Landscape Plan



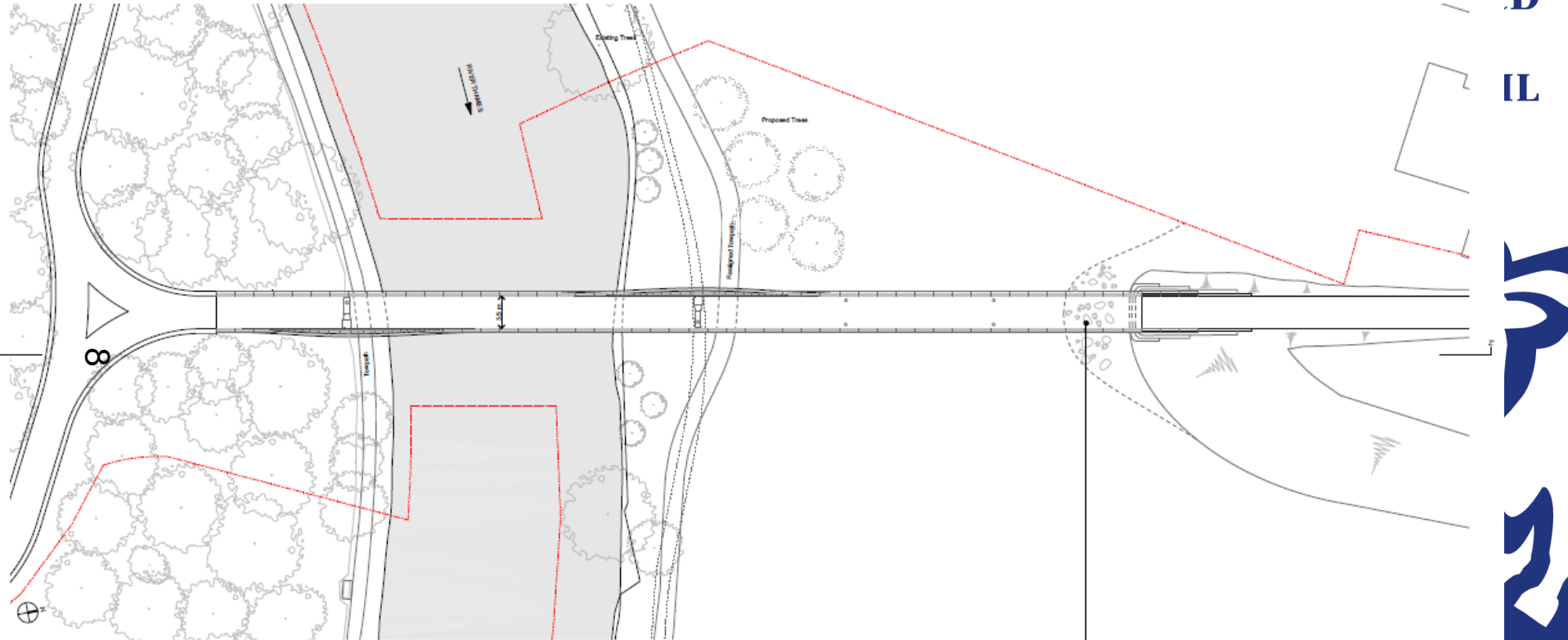
South Landscape Plan

www.oxford.gov.uk



7

Bridge Layout

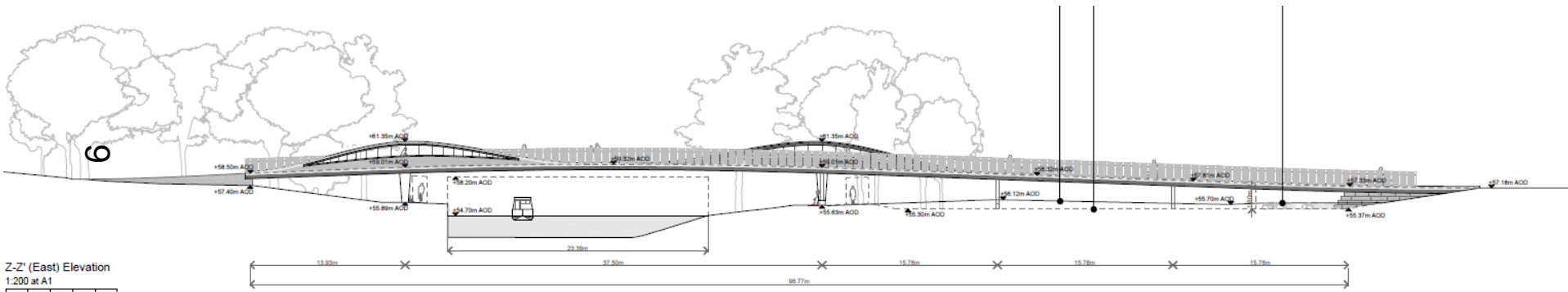


General Arrangement Plan
1:200 at A1

IL



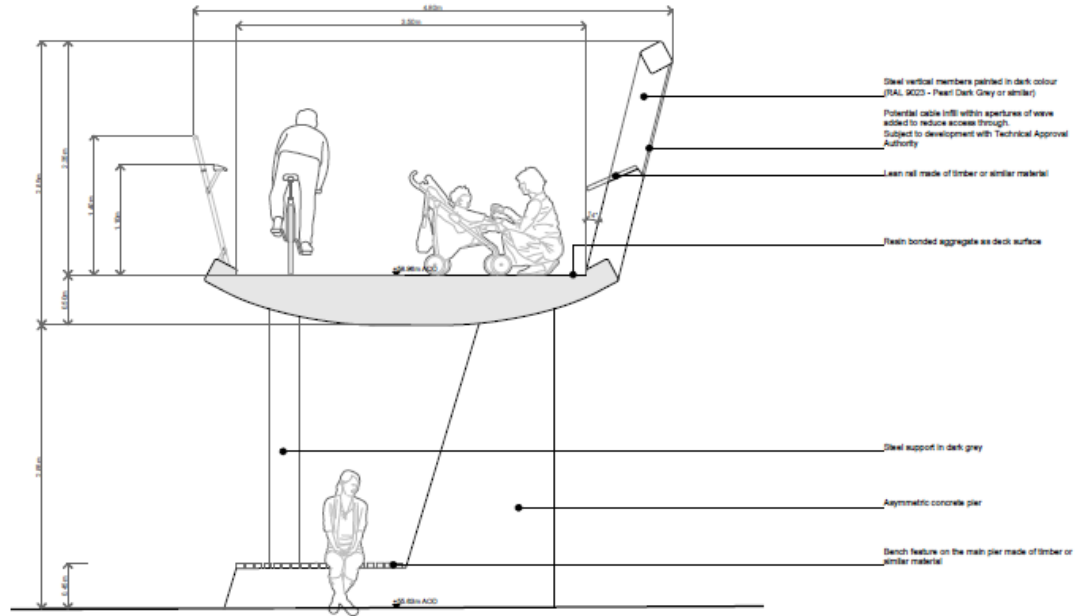
Bridge Elevation



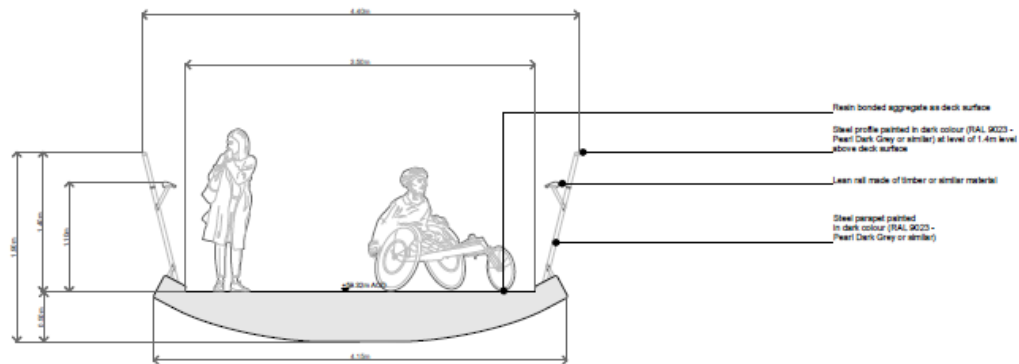
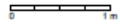
Z-Z' (East) Elevation
1:200 at A1



Bridge Section



Section D-D' - Main Support
1:25





Steel profile painted in dark colour (RAL 9023 - Pearl Dark Grey or similar) at level of 1.4m level above deck surface



Steel exterior structure painted in light colour (RAL 9010 - Pure White or similar)



Steel vertical members painted in dark colour (RAL 9023 - Pearl Dark Grey or similar)



Steel interior structure painted in dark colour (RAL 9023 - Pearl Dark Grey or similar)

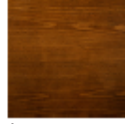


Steel parapet painted in dark colour (RAL 9023 - Pearl Dark Grey or similar)

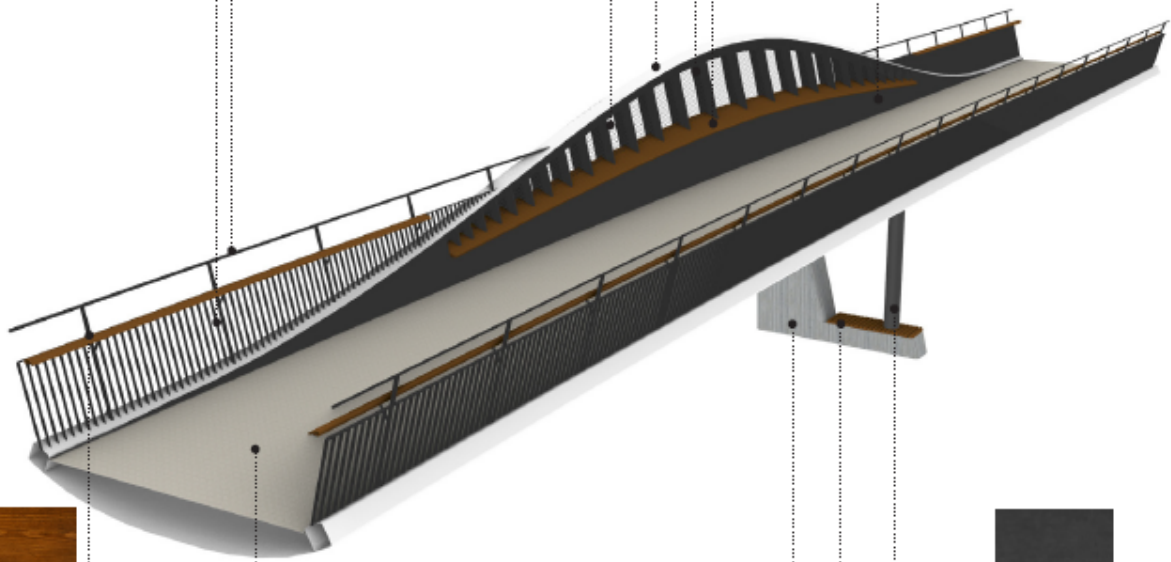


Potential cable infill within apertures of wave added to reduce access through. Subject to development with Technical Approval Authority

Lean rail made of timber or similar material



11



Hand rail made of timber or similar material



Resin bonded aggregate deck surface finish in light colour



Asymmetric concrete pier

Steel support (painted in RAL 9023 - Pearl Dark Grey or similar)



Bench feature on the main pier made of timber or similar material



Visualisation from Grandpont Nature Park/Southbank

ord.gov.uk



**OXFORD
CITY
COUNCIL**

12



TYPE 3 VISUALISATION



Visualisation from Oxpens Meadow

d.gov.uk



CITY OF
LINCOLN
COUNCIL



13

TYPE 3 VISUALISATION



Visualisation from Oxpens Road



14

TYPE 3 VISUALISATION



View from Oxpens Road



15

www.oxford.gov.uk



**OXFORD
CITY
COUNCIL**



View from Oxpens Meadows



16

www.oxford.gov.uk



**OXFORD
CITY
COUNCIL**



View from towpath on northern side



www.oxford.gov.uk



View from towpath on northern side



18

www.oxford.gov.uk



**OXFORD
CITY
COUNCIL**



View from towpath on southern side



19

www.oxford.gov.uk



**OXFORD
CITY
COUNCIL**



View from southern side



20

www.oxford.gov.uk



**OXFORD
CITY
COUNCIL**



Visualisations



Visualisations



22



Visualisations



This page is intentionally left blank